



## **1. Meeting Details**

### **1.1 Meeting Time and Venue**

6.50 pm Waterlily Room, Whittlesea Council Offices.

### **1.2 Present**

Glenn Eckardt, Peter Duncombe, Nathan Duncombe, Robert Sutton, Ashley Sutton.

### **1.3 Apologies**

Ron Harvey, Lee Robinson, Kevin Balaam, Michael Bates.

## **2. Previous Minutes**

### **2.1 Confirmation of Previous Minutes**

Motion: The minutes for the meeting of 29-09-2014 are accepted as a true indication of the meeting:

Moved: Peter      Seconded: Glenn      Motion accepted.

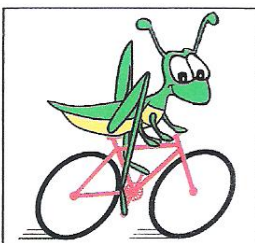
### **2.2 Business arising from Previous Minutes**

All items are covered in their appropriate sections.

## **3. Rides Subcommittee**

### **3.1 Ride Reports**

- ♦ Sunday 5/10 – Fairfield Boathouse: Glenn led a relaxed pace ride to Fairfield Boathouse, with 12 riders, in nice weather conditions.
- ♦ Sunday 12/10 – Two Rides: Glenn lead a ride to Jells Park, while Ron led a shorter ride to Petty's Orchard before return via Templestowe. In total 13 riders participated in two great rides.



- ♦ Sunday 19/10 – Alternative to Around the Bay; Ron led two loop ride through Macleod, Watsonia, Greensborough (loop 1) and Mill Park, Epping, Thomastown (loop 2).
- ♦ Sunday 26/10 – Brunetti's for Coffeee; Lee led a leisurely paced ride to Brunetti's for Coffee via the Darebin Creek, with 13 people attending.
- ♦ Twilight rides have commenced.

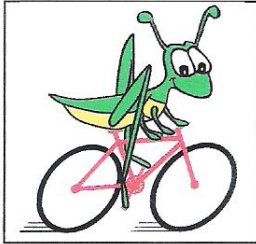
### 3.2 Future Rides

- ♦ Sunday 2/11 – Federation Trail. Ride Leader: Peter Patterson, Start at 8.00 am from University Hill.
- ♦ Sunday 9/11 – Super Sunday. Ride Leader: Rob, Start at 8.00 am from University Hill.
- ♦ Sunday 16/11 - Creeds Farm. Ride Leader: Lee, Start at 8.00 am from Thomastown Library.
- ♦ Sunday 23/11 – Montsalvat in Eltham. Ride Leader: Ron, Start at 8.00 am from University Hill.
- ♦ Sunday 30/11 – To be advised. Ride Leader: Glenn, Start at 8.00 am location to be advised.
- ♦ Sunday 7/12 – End of year ride. Ride Leader: Peter, Start at 8.00 am location to be advised.

### 3.3 Ride Issues

- As a common courtesy and for safety reasons the BUG should move off the pathway when stopped to allow for safe passage of other traffic. This is especially important with increasing numbers of riders on BUG rides. Ride leaders should inform the group where appropriate.

## 4. Marketing Subcommittee



- ◆ BUG Jerseys - BUG jersey artwork finalised. Turn around time for delivery from deposit date ~ 4 weeks. Glenn and Peter to liaise to organise payment. Expected delivery date late November to early December.

## 5. Finance and Membership Subcommittee

### 5.1 Treasurer's Report

- Online Banking - Read-only online bank with NAB has been setup, Ron or Michael to provide further details.

### 5.2 Finance/Fundraising Report

- New Bank Signatory – Awaiting progress report from on becoming a bank signatory (see previous minutes).

### 5.3 Membership Report

- New Memberships – The committee has accepted the following new members to the Whittlesea BUG:
  - Peter Duncombe
  - Nathan Duncombe
  - Bruce Manison
  - Emily Physick

## 6. IT & Website Subcommittee

### 6.1 Newsletter Items

- ◆ Annual General Meeting, Anniversary for BUG
- ◆ Still waiting on Lee for "Rider Survey".

## 7. Advocacy Subcommittee

### 7.1 Issues Raised for the BUG's Consideration

- ◆ Cycling Strategy – Peter to inquire about the status of the City of Whittlesea cycling strategy, as it was scheduled for release in September.

## 7.2 Council Update

- ◆ Road Safety Signs – Peter to investigate the feasibility of reutilising the share the road safety signs, during the summer months. Possible locations; past bridge Inn Rd (towards Whittlesea), and Childs Rd.

## 7.3 New Infrastructure

- ◆ Grant Application for Linkage of Rusty Bridge to Hume – Joint application between Whittlesea BUG and Parks Victoria was unsuccessful. Look for other avenues of funding in the future.

## 8. Committee Guidelines

### 8.1 Constitution/Model Rules

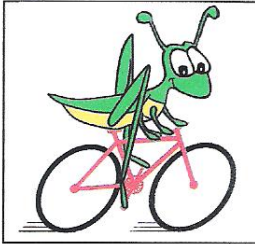
- ◆ New Model Rules – Need to review them and have details ready to be adopted at this year's AGM. Recommend adopting the rules and as they and point out any differences it will make. Lee to organise.

## 9. Other Business

### 9.1 Annual General Meeting

- Annual General Meeting set for Wednesday 26<sup>th</sup> of November at 7.30 pm at the Whittlesea Council Offices.
- Presentation to be sent by Peter and collated.
- Quote for catering to be obtained, by Peter.
- Speakers have been invited and the room has been booked.

### 9.2 WBUG Bikes



- ◆ Peter to again request Michael Bates to check our banking records to see if there are any indications from our accounts that bikes were purchased.

### 9.3 WBUG's 5<sup>th</sup> Anniversary

- ◆ Glenn pointed out that the BUG will have been operating for five years next year and we should think about ways of celebrating and promoting the BUG within the community.

### 9.4 Australia Day Tent

- ◆ Peter to look into the aspects of the BUG having a tent at the Australia Day celebrations.

## 10. Future Meetings

### 10.1 Committee Meetings

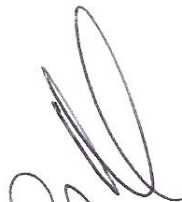
- ◆ The next committee meeting will be at 6.30pm Wednesday, 26<sup>th</sup> November, 2014, before the 7.30pm AGM.
- ◆ The first meeting for 2015 will be on the 2<sup>nd</sup> of February 2015 at 6.30pm at the Council Offices.

### 10.2 General Meetings

- ◆ AGM to be held at 7.30pm on the 26-11-14 at Council Offices.

## 11. Meeting Closed

- ◆ 7.50pm

  
P. Doncombe · 2/2/2015